

# RAPTECH IS *THE* BUSINESS MANAGEMENT AND ANALYTICS TOOL FOR SMALL, AGILE AND GROWING BUSINESSES

- End-to-end business operations management **PLUS** 360-degree insight and analysis.
- Enterprise capability without the complexity, disruption or cost.
- Modular to meet your specific needs now **AND** be future-ready



Grow Customers



Drive Revenue



Reduce Cost

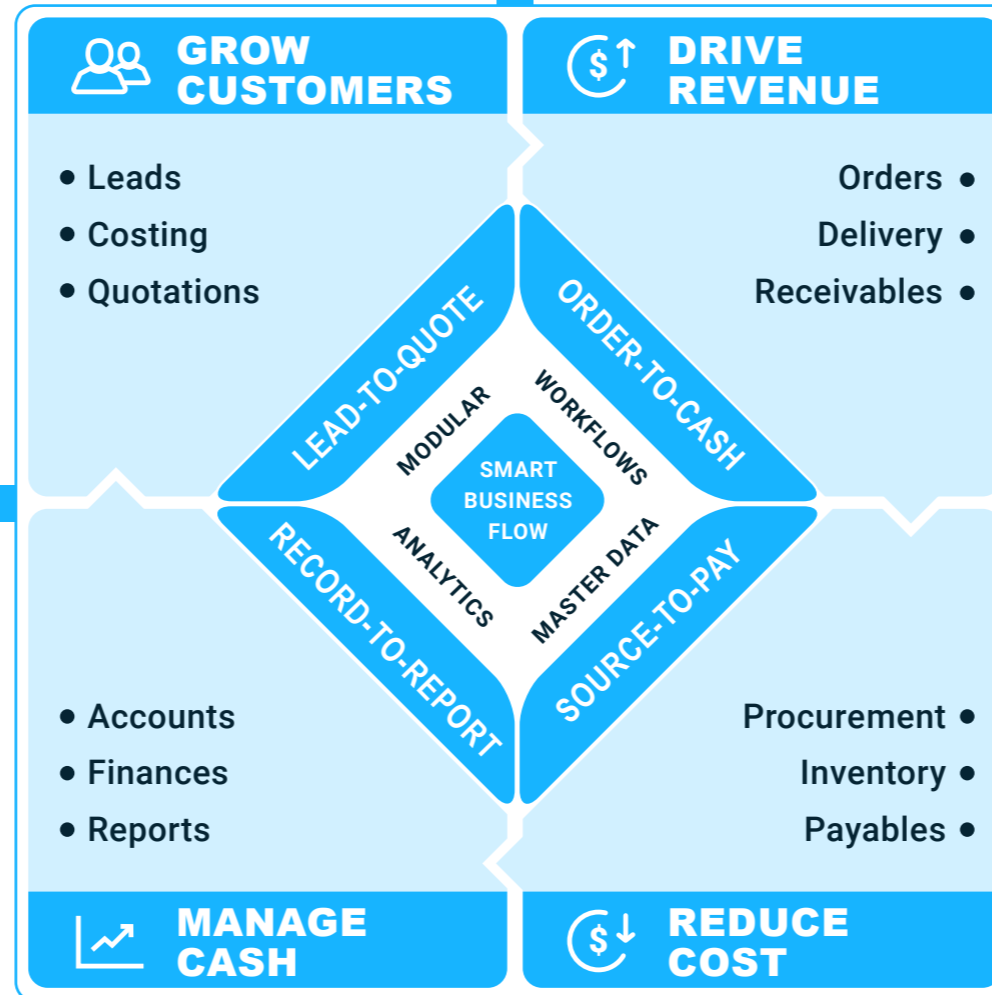


Manage Cash

# CRITICAL SUCCESS FACTORS FOR BUSINESS GROWTH

## GROW CUSTOMERS

Power your business with accurate, relevant and reliable customer data. Nurture relationships and create opportunities with lead and quotations management.



## DRIVE REVENUE

Trusted and reliable ordering, acknowledgement and fulfilment experience in the customers' channels of choice. Integrated order, billing and receivables for accuracy and efficiency.

## MANAGE CASH

Finance, accounting and back office management that is compliant and integrated with your business operations and management reporting for complete visibility, control and efficiency

## REDUCE COST

Manage your supplier base, spend, purchasing and relationships efficiently and effectively in one place with triggers and controls to minimise cost and leverage contractual terms.

# RAPTECH ANALYTICS THE PATH TO INSIGHT LED DECISION MAKING



### COMPLETE

Complete visibility all in one place of 360 business performance



### CONFIGURABLE

Comprehensive reporting suite with configurable options.

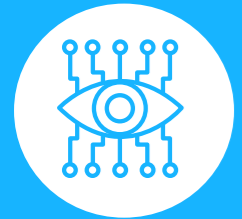


### REALTIME

Leverage accurate, and real-time insight to control the business

# INTEGRATED, EFFICIENT AND ROBUST END TO END OPERATIONS FOR...

---



## VISIBILITY

End to End business operations management plus 360-degree reporting, insight and analysis. performance.

Accessible, real time & business-wide reporting. Insight, control and data driven performance.



## CONTROL

Automated, collaborative workflow and approvals for effective and robust business functional operations.

Consistent Master Data Management for Customer, Supplier and Product driving operational excellence.



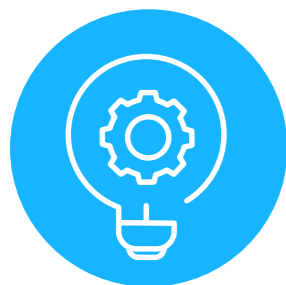
## EFFICIENCY

Business-wide integration and seamless flow of information, goods and cash for efficiency and accuracy.

Simple and logical user interfaces and functional flows, configurable to match the demands of your business.

# ENTERPRISE CAPABILITY WITHOUT THE COMPLEXITY, DISRUPTION OR COST

---



## Powerful and Practical

We bring together all aspects of running your business using deceptively simple, affordable and controllable tools.



## Cost Effective & Flexible

Designed to be the right fit for you. Modular to grow as you do and much more capability for far less cost.



## Easy To Use

Logical and intuitive interface and mobile compatibility for any time access and support from our pro team whenever you need it.



## Non-Invasive

Eliminates the need for costly and disruptive implementations and designed to make your working day easier.

## CONTACT US FOR A NO OBLIGATION DEMO OF RAPTECH TODAY

<https://www.raptechsolution.com/demo/>

### UK

Corby Enterprise Centre,  
London Road,  
Priors Hall,  
Corby NN17 5EU

**Ph : +44 (0)1536 639050**

### UAE

Level 30, The H Hotel,  
Office Tower,  
#1 Sheikh Zayed Road,  
Dubai –UAE  
P.O. Box 60418

**Ph : +971509271966**

### INDIA

iPact Tech Solutions Pvt Ltd,  
#98, 2nd Floor,  
Bhima Jyothi LIC Colony,  
Karnataka,  
Bangalore 560079

**Ph : +919169167169**

✉ [sales@raptechsolution.com](mailto:sales@raptechsolution.com)

🌐 [www.raptechsolution.com](http://www.raptechsolution.com)

**in** <https://www.linkedin.com/company/raptech-solution>

🐦 <https://twitter.com/raptechsolution>